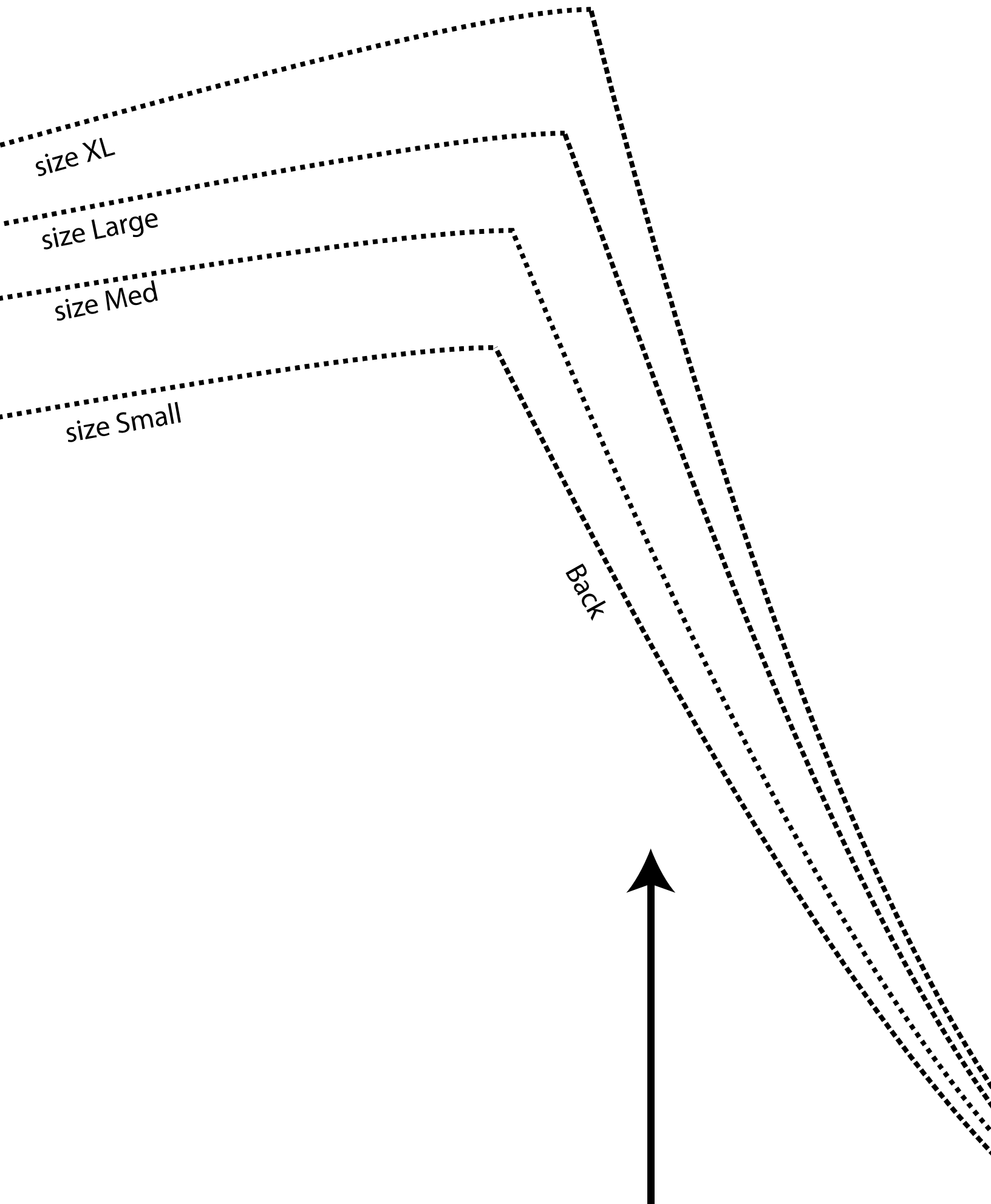


Front

Peasant Dress  
Sleeve  
Cut 2  
  
2024



This line should print 4" long



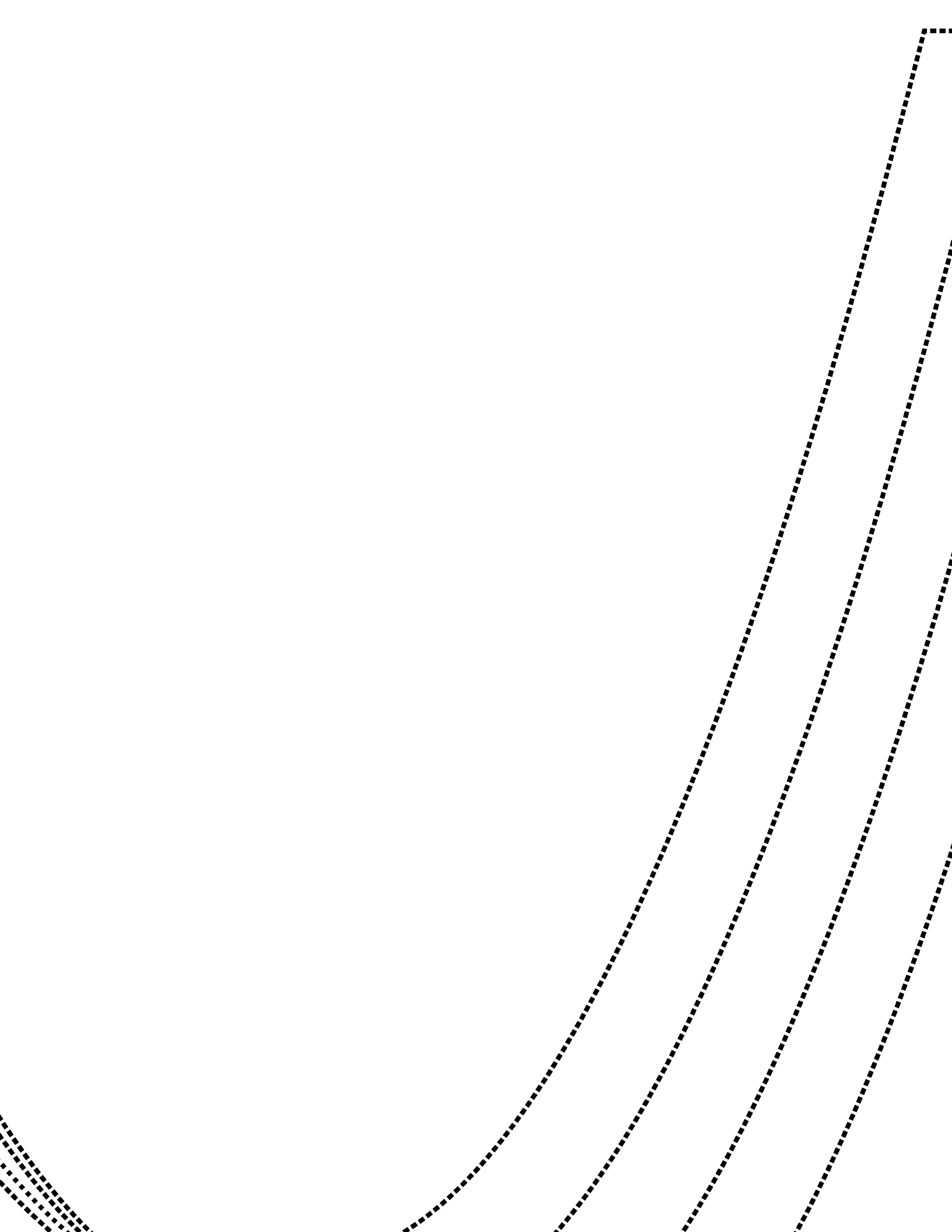
size XL

size Large

size Med

size Small

Back





size XL

size Large

size Med

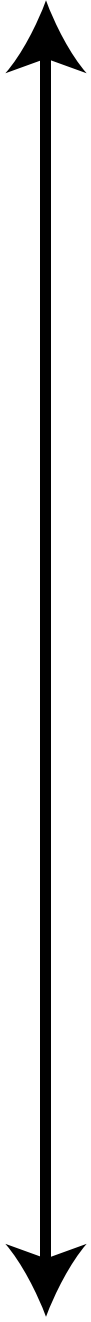
size Small



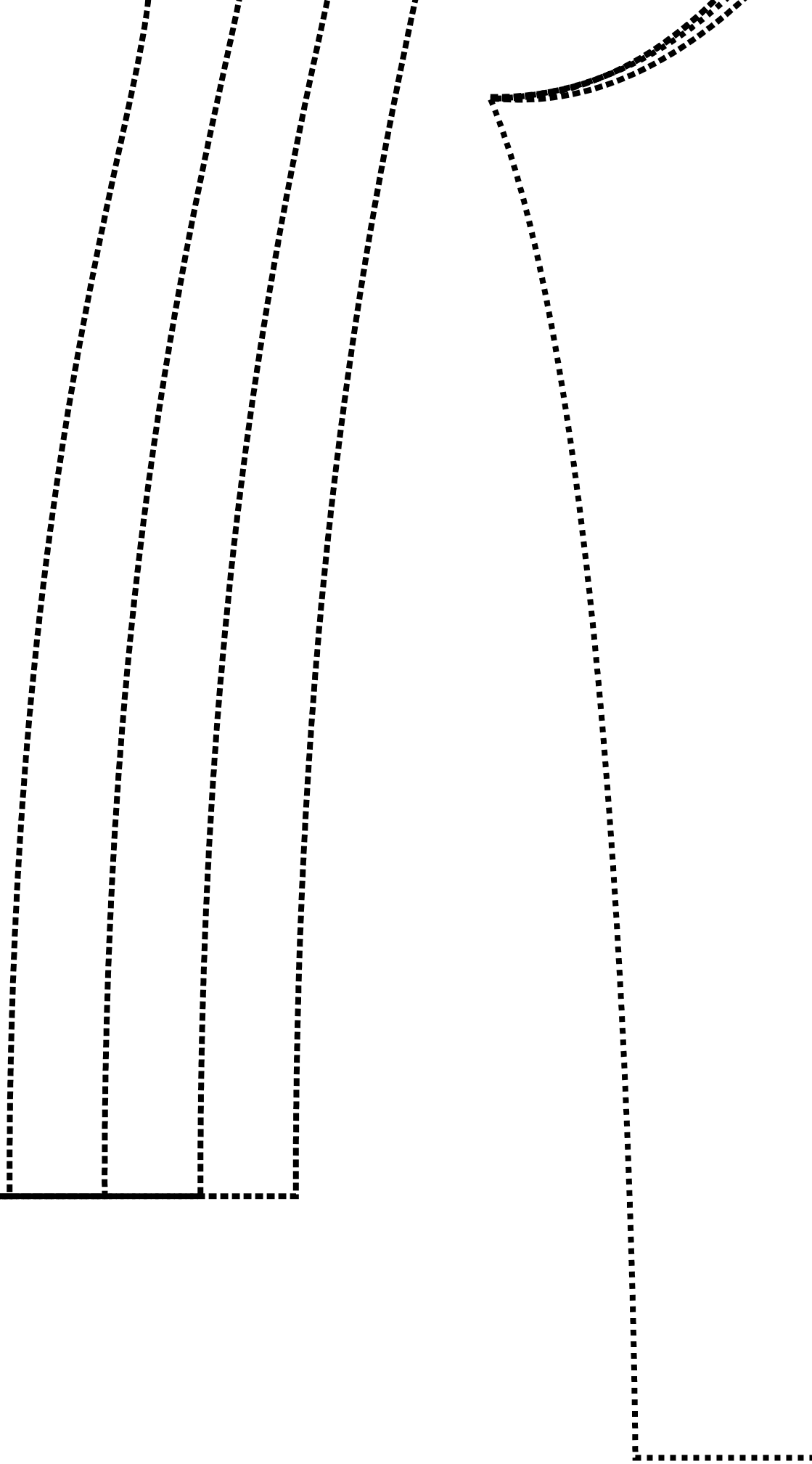
Peasant Dress  
Top Front  
Cut 1 on fold

from [www.janelwashere.com](http://www.janelwashere.com)  
for personal use only

2024



Grain of fabric





Peasant Dress pattern size MEDIUM  
from janelwashere.com  
janelwashere@gmail.com

Half-inch seams allowed throughout

Ruffle piece is cut 12" by 44" (width of fabric)  
Cut four of ruffle pieces

Instructions from memory, if you spot a mistake please let me know :-)

Sew sleeves to the front and back pieces, then fold over the top edge neckline into a casing for 1/4" elastic.

Sew two skirt pieces together to form a skirt back and cut one skirt piece on the fold for the front, adding in triangles to fill in the corners (because it's wider than 45" fabric folded in half).

I like to wait with the side seams until last so the ruffle gathering is in two flat parts.

Sew skirt front to bodice front and skirt back to bodice back. Either make the top overhang by an inch or so in order to fold over as a casing for the waist elastic, or use a separate strip of fabric to form the casing.

Sew two ruffle pieces together, gather and sew to skirt front, and repeat for skirt back.

Make the sleeve elastic casing and stitch the center of it, just don't sew clear to the edges, leave an inch or two unsewn.

Sew down the entire side starting at the sleeve, under the arms, down the bodice and skirt to the bottom of the ruffle.

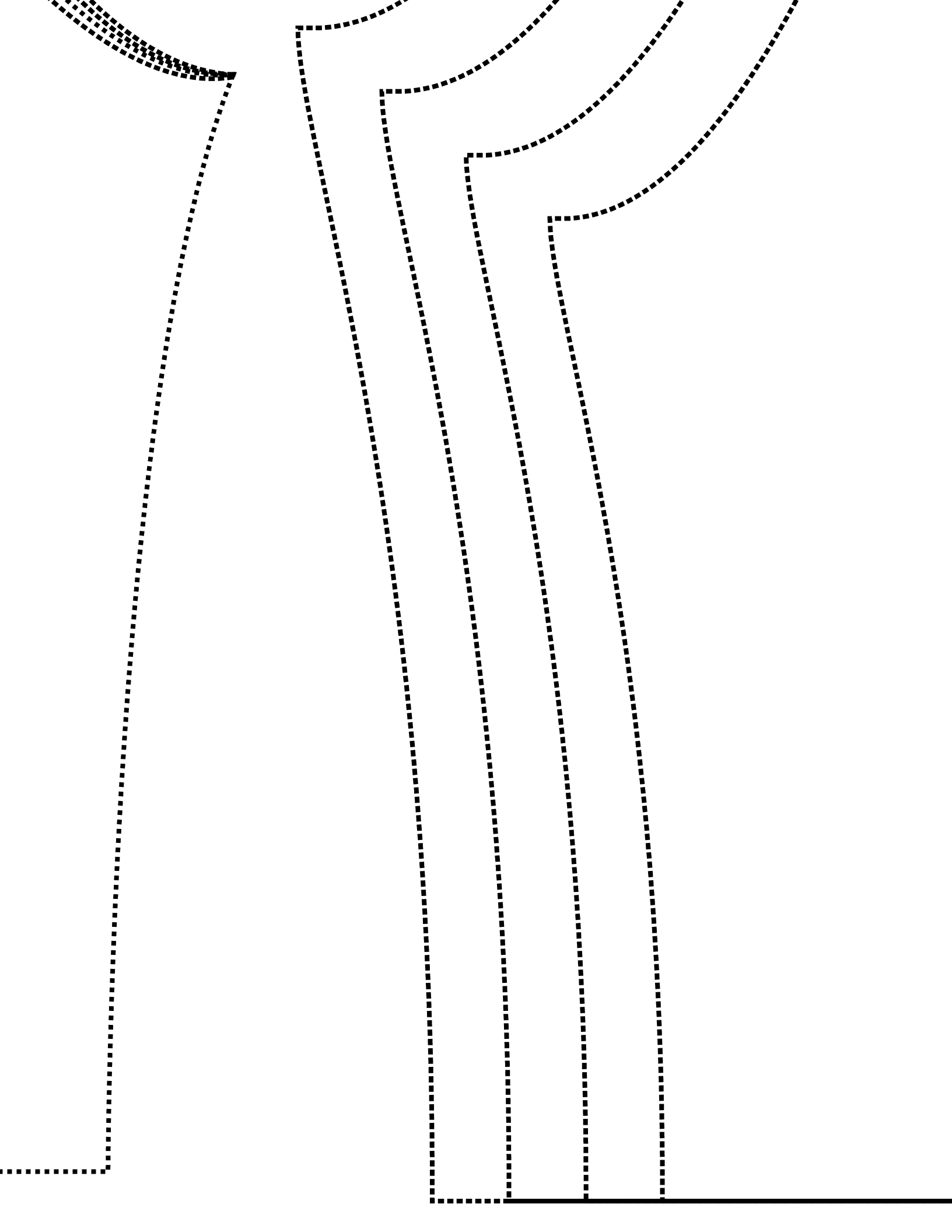
Finish the sleeve casing and put in the elastic.

Hem the ruffle.

---

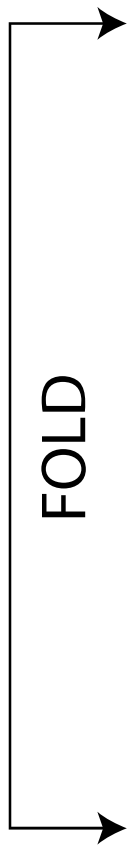
Grain of fabric

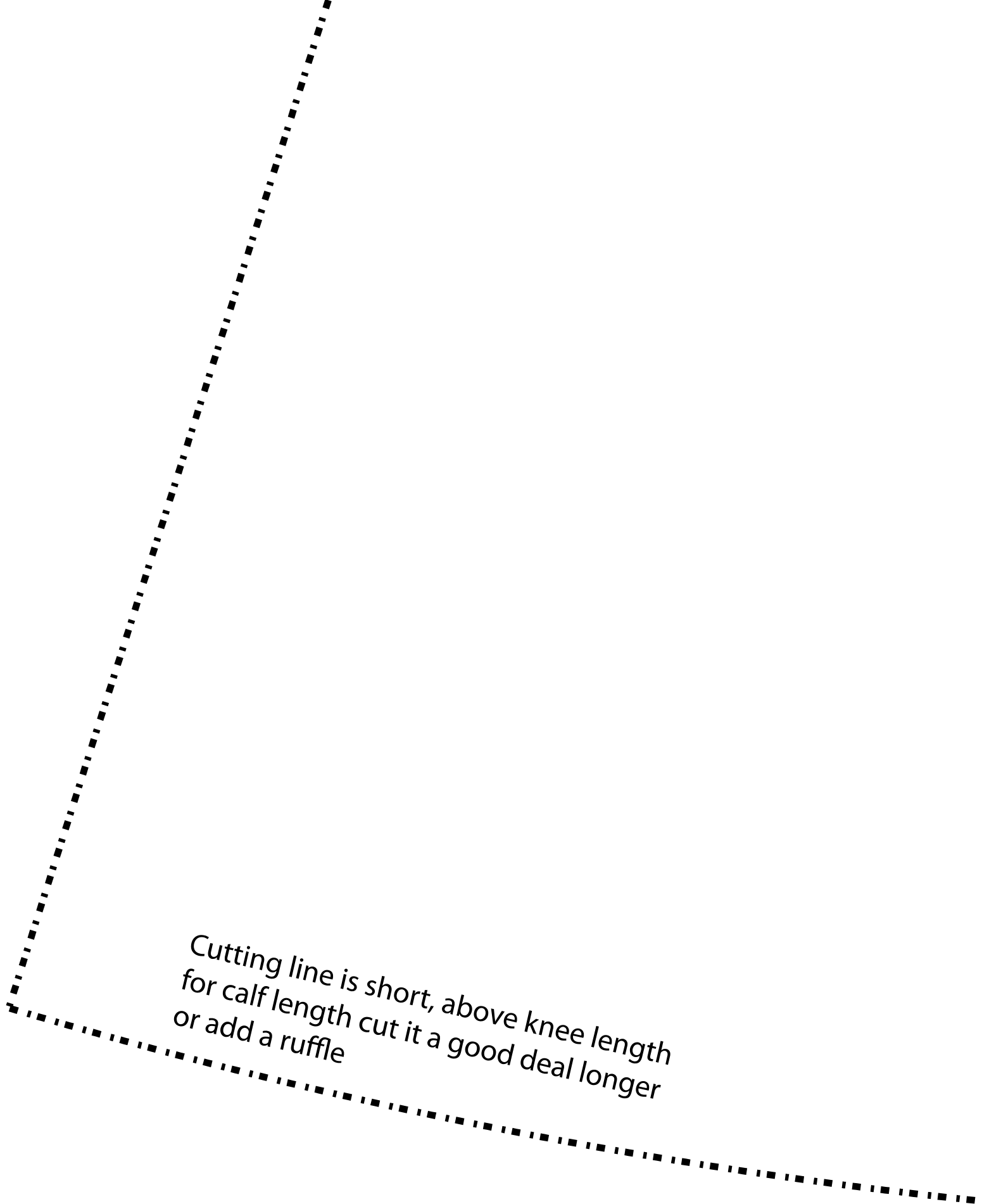




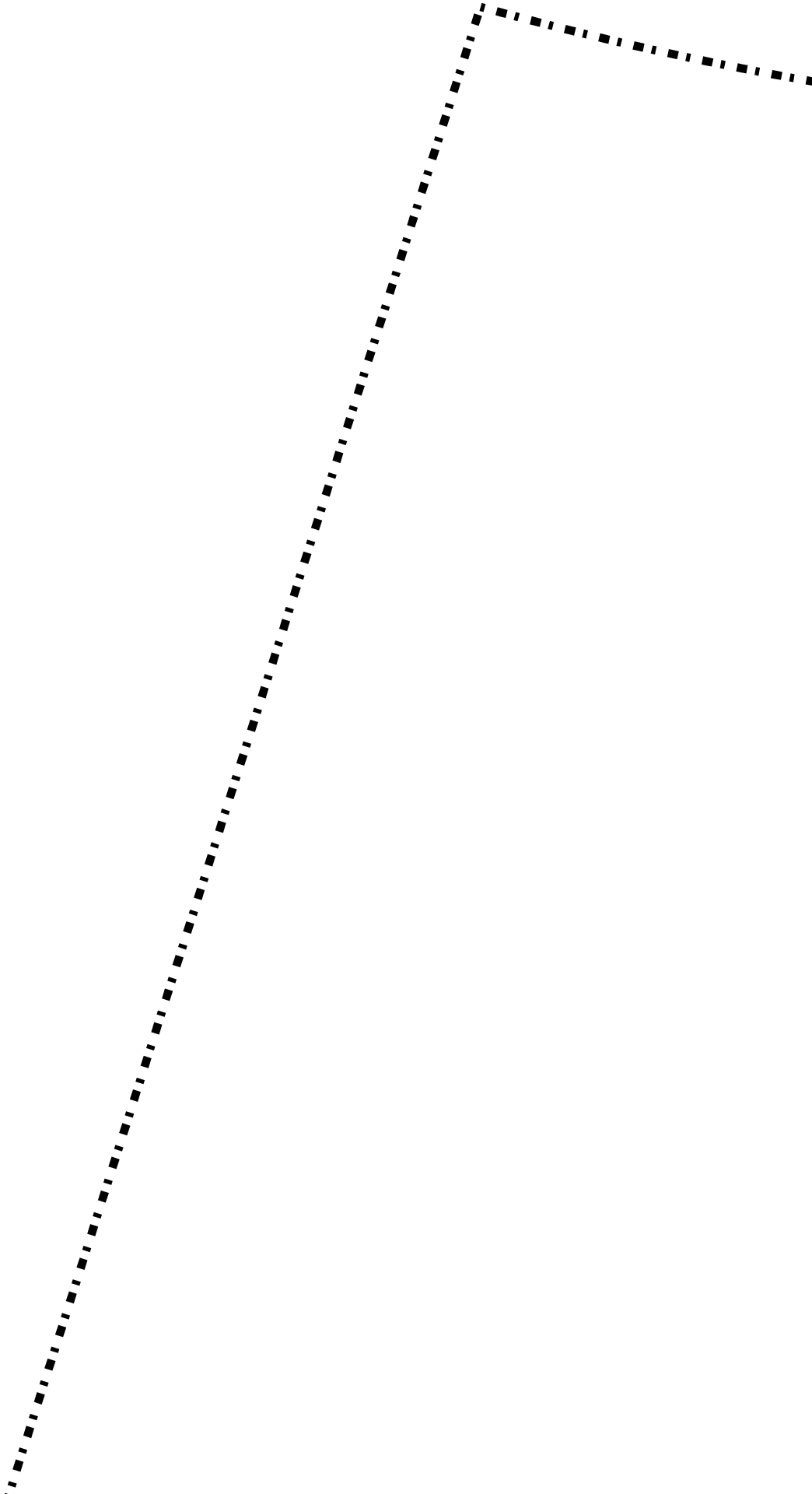
Peasant Dress  
Top Back  
Cut 1 on fold  
2024

from [www.janelwashere.com](http://www.janelwashere.com)  
(c) personal use only





Cutting line is short, above knee length  
for calf length cut it a good deal longer  
or add a ruffle





Peasant Dress

[www.janelwashere.com](http://www.janelwashere.com)

Skirt piece

Cut 4 OR cut 2 on fold

(fill in corners with extra fabric)

Size Medium

Cut Large 1" wider and Small 1" narrower





